

Packed product analysis workshop Coffs Harbour December 2018

 Department of Primary Industries

Coffs Harbour banana packed product analysis

Matt Weinert
Leanne Davis

Thanks to

NSW DPI – Mick Davy
NSW growers
Golden Dawn – Geoff Bridgfoot, Paul Gibbins,
Paul Thorburn, Kay Adriaansz
D&D Ripeners – Dave Norberry

What's the issue?

Poor quality fruit!

Knockbacks from retailers and loss of stores
5 Coles stores lost recently with management changes

Packed product analysis

Use the Woolworths Coffs Harbour specs

Unpack boxes and check if clusters are within specs
3 cartons from growers prior to despatch

Results presented today are anonymous

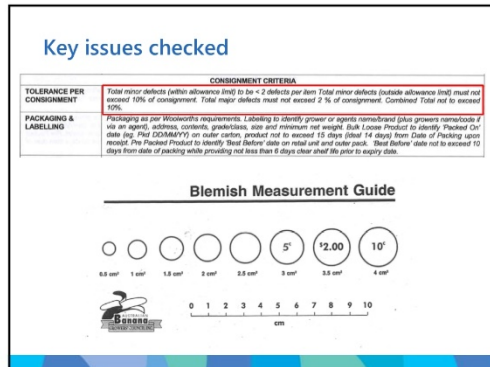
Initial data only

Product specifications

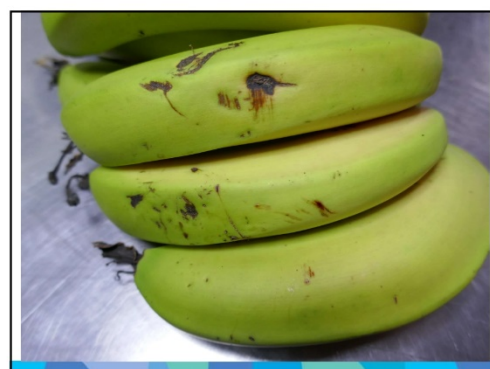
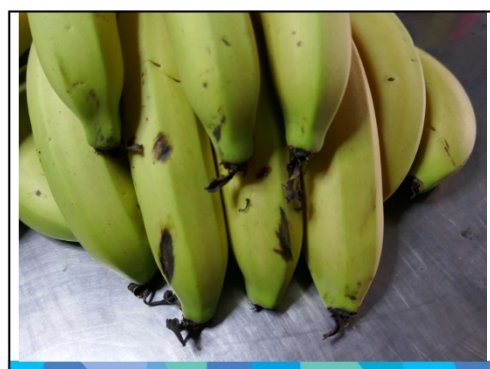
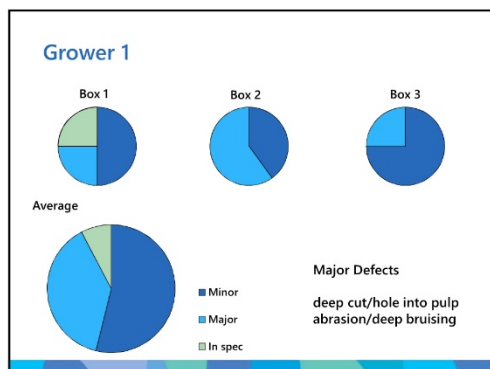
Woolworths	Produce Specifications	Woolworths	Produce Specifications
			

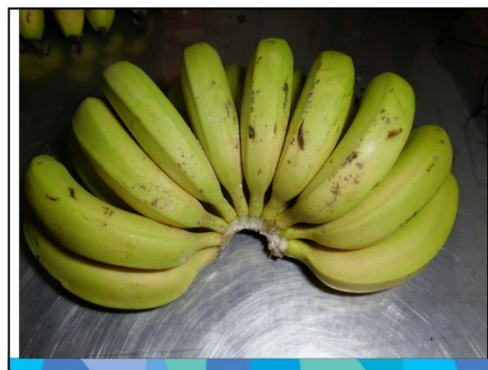
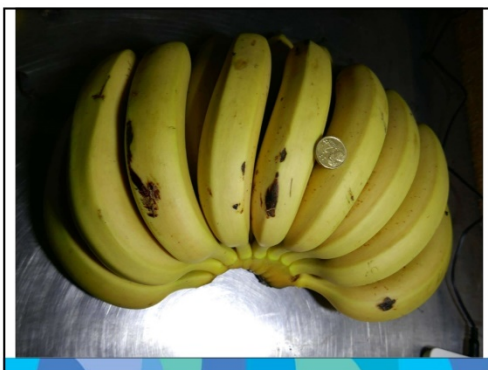
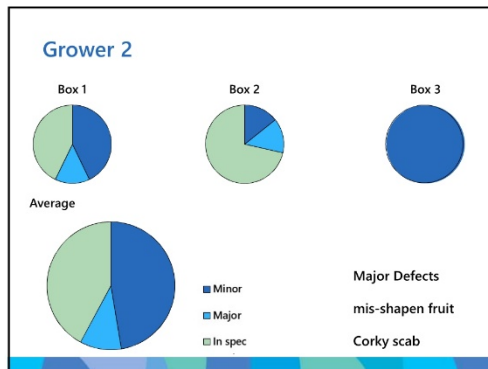
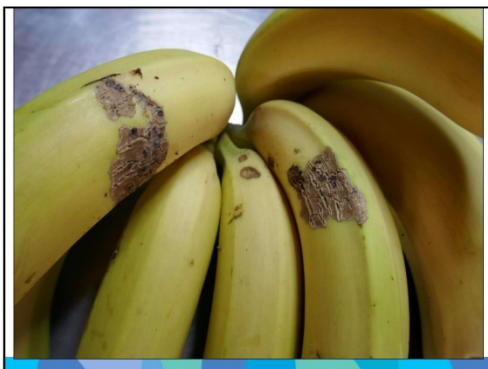
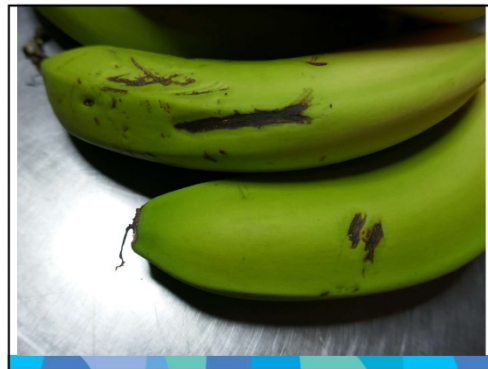
Key issues checked

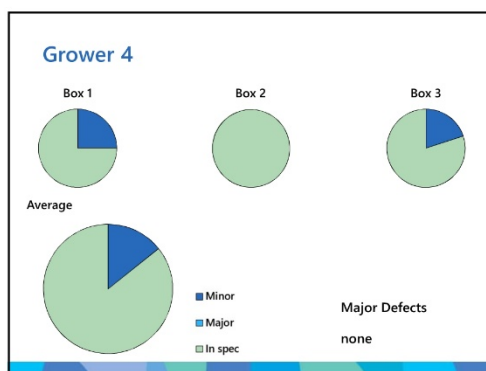
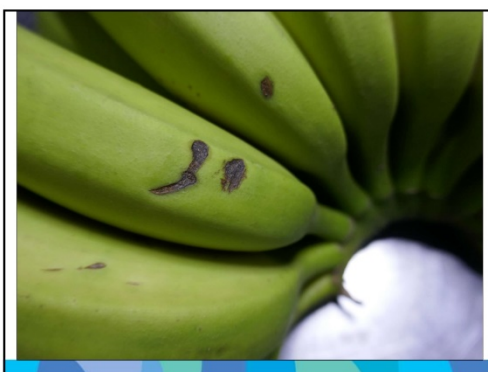
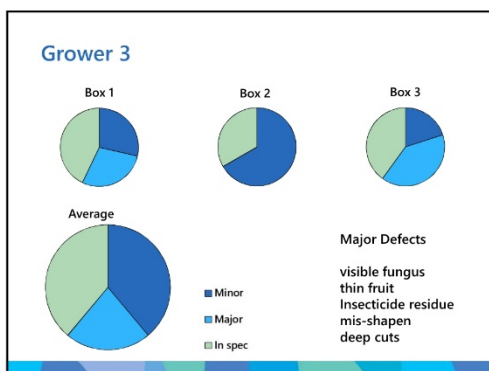
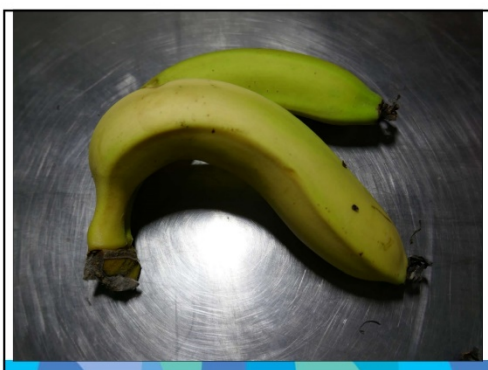
MAJOR DEFECTS	
INSECTS	With obvious live insects or other pests
DISEASES	With fungal diseases or soft rotting (water-soaked black and red areas) rot
PHYSICAL / PEST DAMAGE	With splits, holes, deep bruises or cuts through the peel into the pulp
SKIN MARKS / BLEMISHES	With excessive scattered brown spotflecks (senescent spotting)
TEMPERATURE INJURY	With dull, greyish, or blackened peel, or brown under peel discoloration (chilling injury). With dark, water-soaked areas (freezing injury). With translucent pitting or blackening of skin, or translucent cores in fruit (heat damage).
MINOR DEFECTS	
PHYSICAL / PEST DAMAGE	With dry brown scab / speckling (direct damage) or with scars (due to hail, bird damage) affecting areas >2 sq cm (per cluster). With reddish-brown patches (filamentous rot) affecting areas >2 sq cm (per cluster). With dark grey stems affecting >4 sq cm (per cluster).
PHYSIOLOGICAL DISORDERS	With reddish-brown discoloration >4 sq cm (maturity browning) (per cluster).
SKIN MARKS / BLEMISHES	With superficial bruising (<1mm deep), abrasion or rub damage (dark brown/black) affecting >4 sq cm (per cluster).

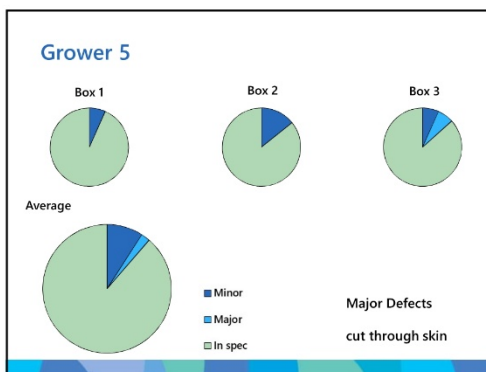
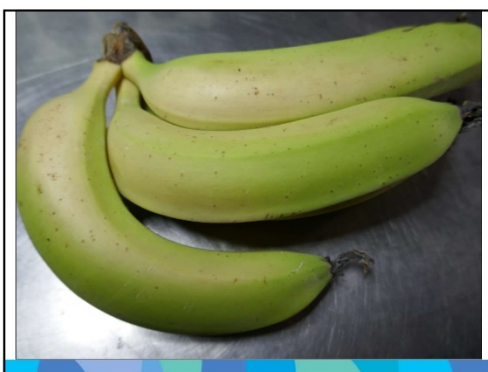
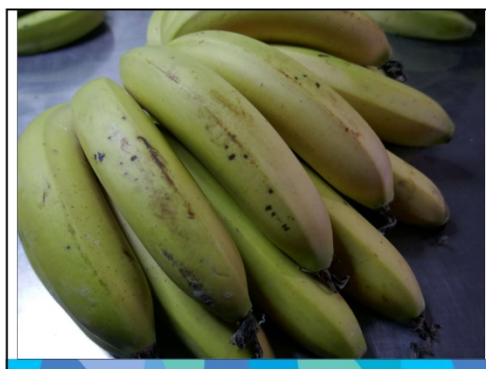
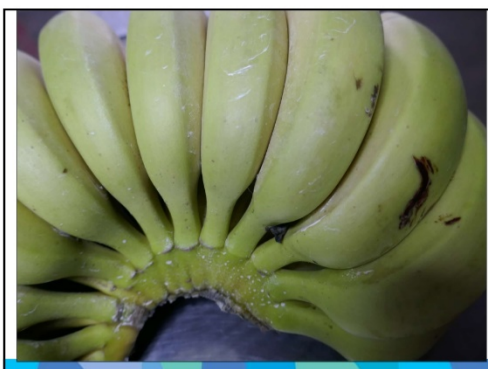
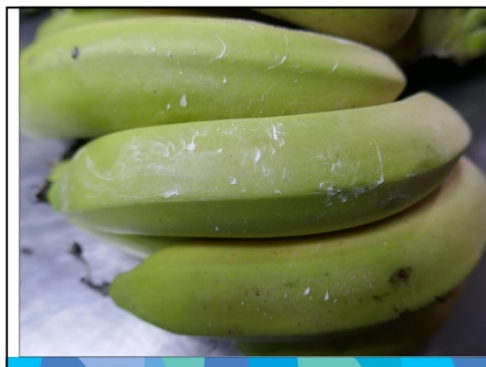


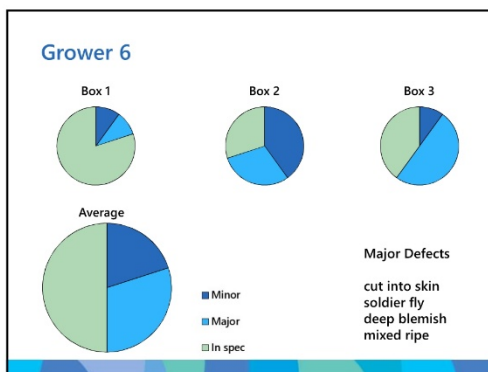
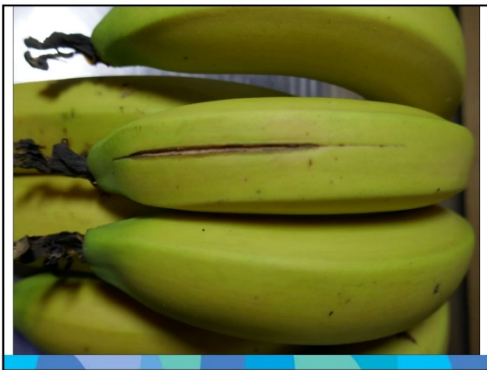
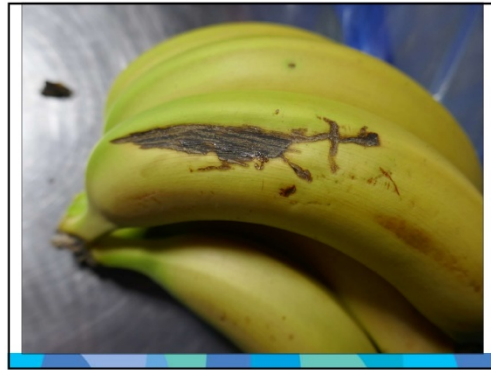
What we found

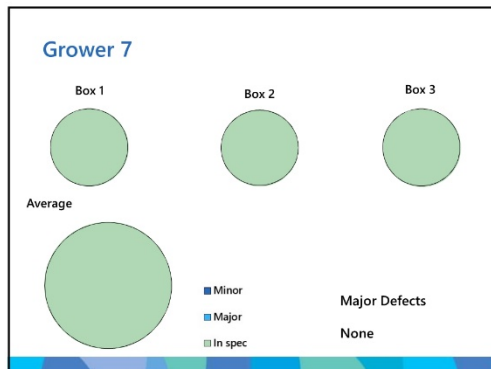
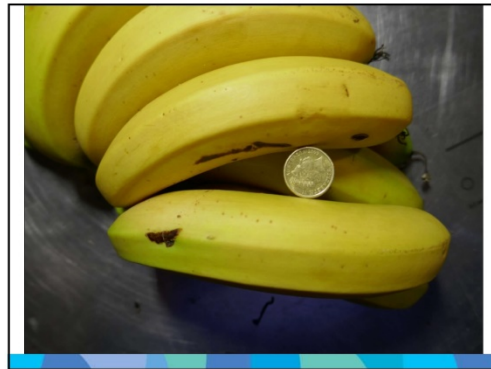
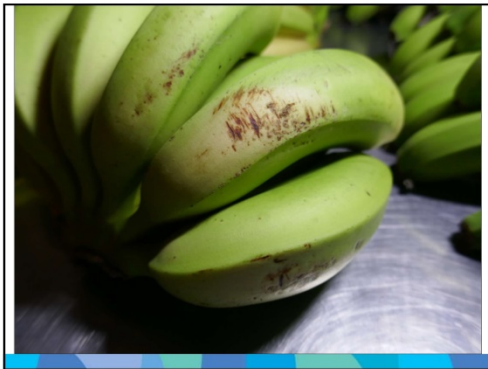
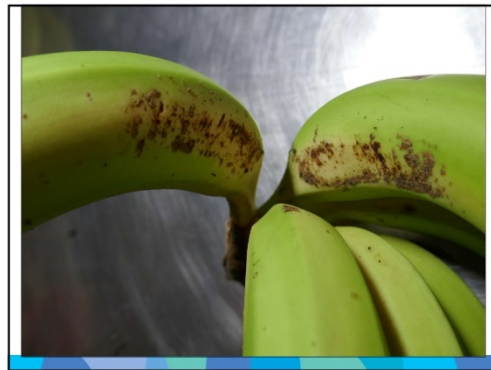


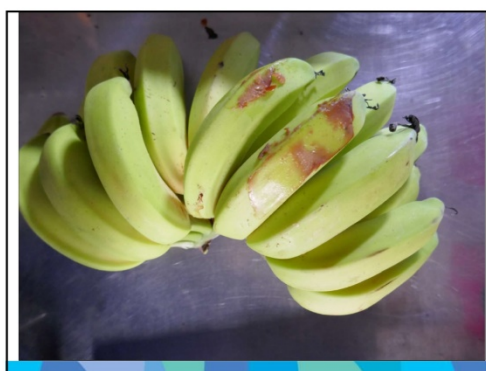












Take home messages

Change what you can

Change is required to maintain current markets

Freshcare and HARPS will be required for growers who supply supermarkets