

### Storm Damaged Onions

*Allium cepa* L.

#### ALLIUM TYPE

Fresh Market and Storage Onion; protocols based on National Crop Insurance Standards; compare damaged and non-damaged portions of field or fields of the same variety, plant age.

\_\_\_\_\_ Record stage of plant growth (V1 to R9)

\_\_\_\_\_ Record dates of planting, storm event(s), evaluation

\_\_\_\_\_ **ESTIMATE PLANT STAND LOSS (NUMBER/ACRE)**

*Figure 1:*

Measure number of plants between furrows (bed width) by 10–20 ft [3–6 m] = 1/1000 Acre [Hectare] at 5 to 6 representative sites in the affected area or field.

\_\_\_\_\_ **ESTIMATE DEFOLIATION (PERCENT LOSS)**

*Figure 2 & 3:*

Estimate percent of foliage damaged (bruised) or removed by the storm activity (10–20 ft [3–6 m] x 1 bed wide at 5 to 6 sites).

\_\_\_\_\_ **ESTIMATE BULB DAMAGE (PERCENT AFFECTED)**

*Figure 4:*

Evaluate percent of 50–100 bulbs at 5 to 6 sites for evidence of storm damage (as cuts, nicks, dents, bruises) on exposed outer 2–3 fleshy scales.



Fig 1



Fig 2

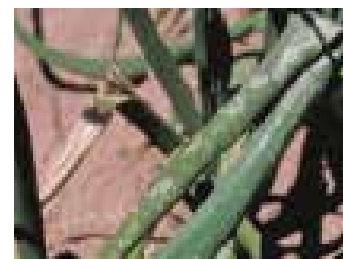


Fig 3



Fig 4