

# VARIETY "G" FACTSHEET

## BACKGROUND

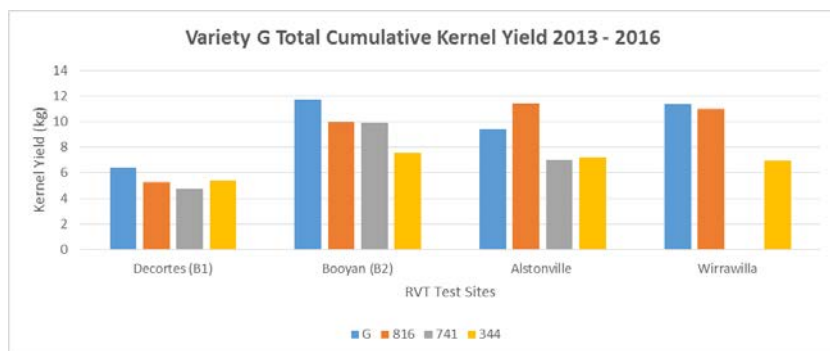
Variety "G" is a new Macadamia variety released to the industry as a result of the National Macadamia Industry Variety Improvement program. Data has been collected on the new macadamia varieties in Regional Variety Trials (RVT's) across production regions in Queensland and New South Wales. These trials have been measuring kernel, tree, disease and processing qualities for the past 2 years and nut-in-shell yield for 4 years. The data presented below comes from these trial sites.

## DESCRIPTION

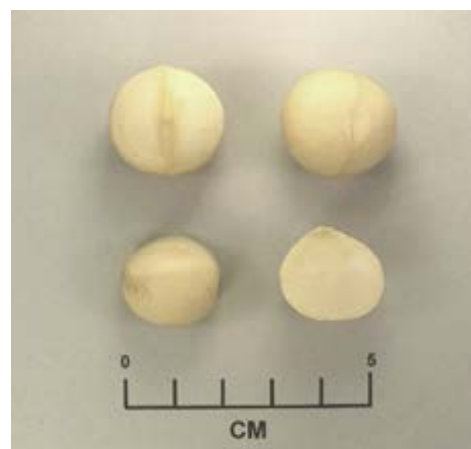
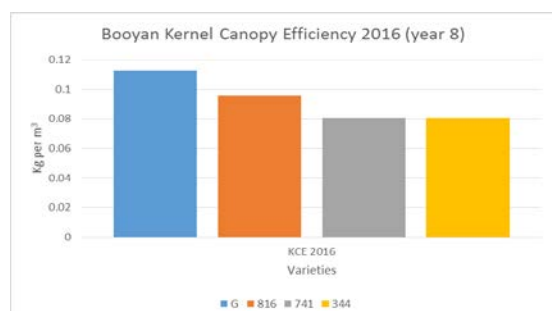
Variety "G" is a precocious, medium to tall, spreading tree with a moderately dense canopy. Cumulative kernel yield over the past 4 years at the Booyan RVT site (2013 – 2016) was 11.7 kg compared with 816 (10kg), 741 (9.9kg) and 344



8 year old variety "G" tree at Booyan



(7.6kg). "G" has a canopy efficiency (grams of kernel per m<sup>3</sup> of tree volume) of more than 111 grams at the Booyan RVT trial site compared to 816 with 95g, 741 with 80g and 344 with 80g/m<sup>3</sup> from 8 year old trees.



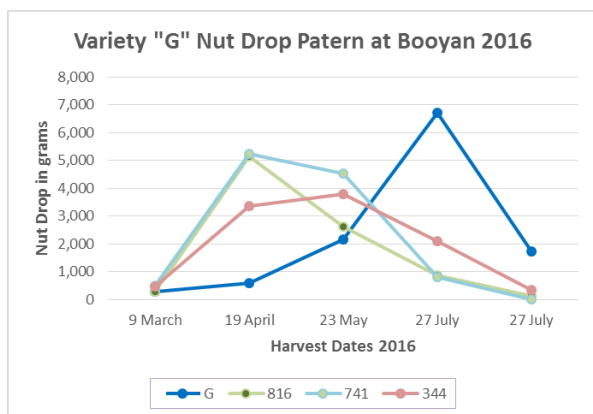
Variety "G" kernel



Variety "G" nut and shell

Variety “G” has a kernel recovery between 40.3% and 42.9% in the Bundaberg region compared with 816 (45%), 741 around 38% and 344 at 34%.

“G” flowers mid-season with a nut drop pattern mid- to late season with the peak in July.



“G” has a low to moderate rating of sticktights (2.5 out of 5 rated by growers) and low susceptibility to husk spot (<1 out of 5) from disease ratings at Bundaberg sites, Booyan and Wirrawilla. Trials at Wirrawilla with 8 year old trees show no evidence of Abnormal Vertical Growth (AVG) and rated 0

out of 2 while the industry standard 344 rated 1.36 out of 2.

Growers at recent field days commented on the open tree form and the yield potential of “G” in Alstonville and Bundaberg sites. Growers in Alstonville rated its commercial potential at 7.22 out of 9, 816 was rated 6.85 and 741, 6.66 out of 9. At the Booyan RVT site variety “G” had an average rating for commercial potential of 7.04 out of 9 while 741 averaged 7.21 out of 9.

Variety G Yield and Tree Comparison				
Booyan RVT Site, 2016				
Variety	G	816	741	344
Kernel Recovery (%)	42.9	45.2	38.3	34.2
Cumulative Kernel Yield (kg) <sup>1</sup>	11.684	9.976	9.901	7.577
kernel Canopy Efficiency (g/m <sup>3</sup> ) <sup>2</sup>	114	95	78	83
Tree Volume (m <sup>3</sup> )	40.4	39.2	49	37.7
Kernel KG per Ha (estimated) <sup>3</sup>	1,443	1,172	1,205	976
<sup>1</sup> - Cumulative Kernel Yield 2013 -				
<sup>2</sup> - 2016 (year 8) Kernel Canopy Efficiency				
<sup>3</sup> - Estimated kernel yield (kg/ha) for 312.5 trees per ha or 8m x 4m				

### DISCLAIMER

The above information is sourced from the eight Regional Variety Trial (RVT) sites in Queensland and New South Wales. This is the best available information on variety performance with a maximum age of eight years old. Each RVT site is randomised and replicated with yield data collected from 2013 to 2016. The information provided here may not be suitable for all sites or regions as varieties perform differently in different locations. The Queensland Department of Agriculture and Fisheries, and Horticulture Innovation Australia provides the above information as a guide only and take no responsibility for the performance of the varieties on individual farms.